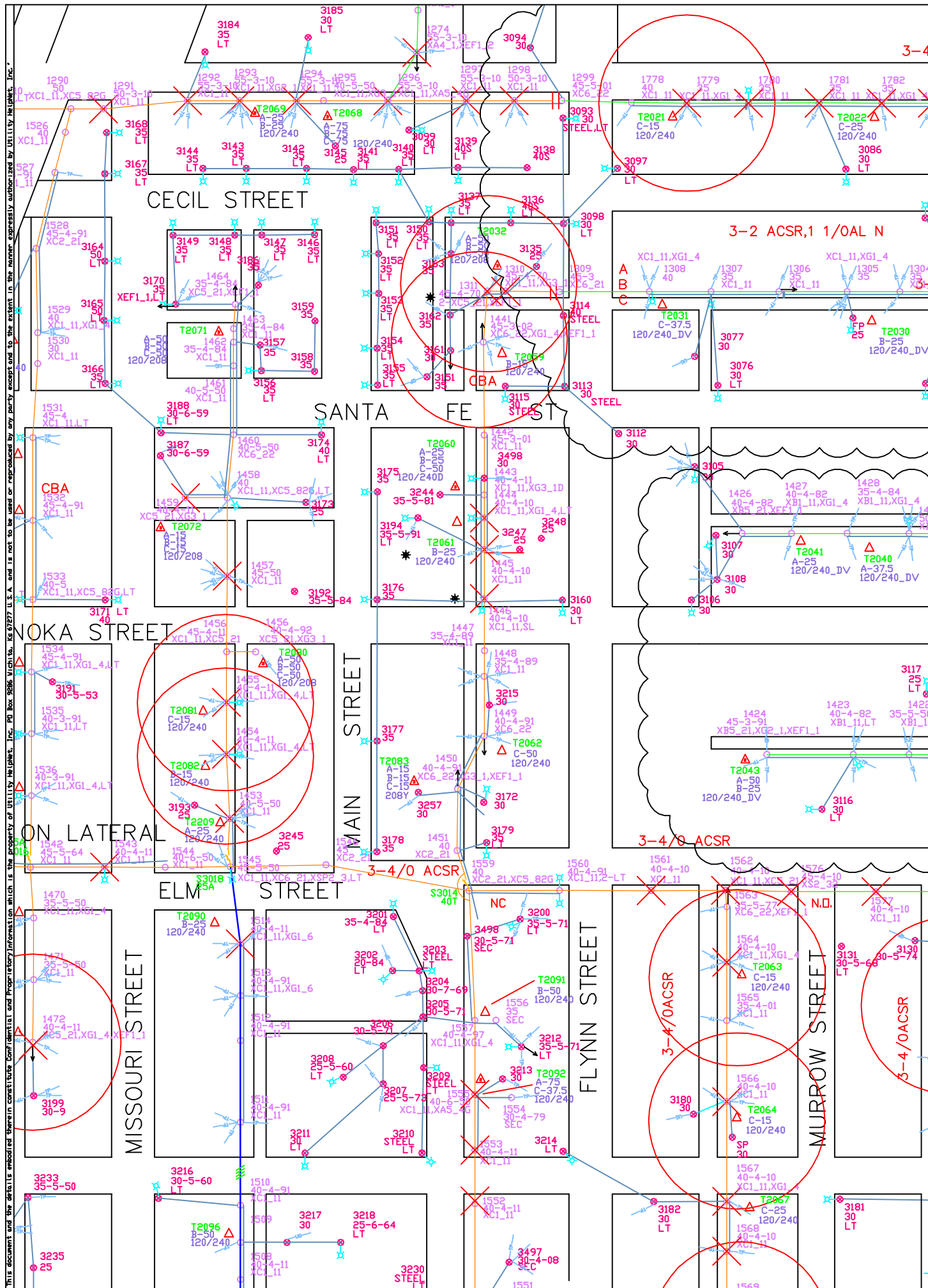


THIS DOCUMENT AND THE DETAILS EMBODIED THEREIN CONSTITUTE CONFIDENTIAL AND PROPRIETARY INFORMATION WHICH IS THE PROPERTY OF UTILITY HELPNET, INC. NO PART OF THIS DOCUMENT IS TO BE REPRODUCED OR TRANSMITTED IN ANY FORM OR BY ANY MEANS, ELECTRONIC OR MECHANICAL, INCLUDING PHOTOCOPYING, RECORDING, OR BY ANY INFORMATION STORAGE AND RETRIEVAL SYSTEM, WITHOUT THE WRITTEN PERMISSION OF UTILITY HELPNET, INC.

NO	DATE	BY	CHK	NATURE OF CHANGE	CITY OF WAYNOKA, OK		DRAWN BY: GEN	DATE: 2/15/2011	CHECKED BY: GEN	DRAWING NO.
					PROJECT MAP C,J,K SH 1 of 2					
					PLOT SCALE: NTS					
Utility HelpNet, Inc PO BOX 9286 TELEPHONE - (316) 946-1144 Wichita, Ks 67277 FAX - (316) 659-0923										





THIS DOCUMENT AND THE DETAILS EMBODED THEREIN CONSTITUTE CONFIDENTIAL AND PROPRIETARY INFORMATION WHICH IS THE PROPERTY OF UTILITY HELPNET, INC. NO PART OF THIS DOCUMENT IS TO BE REPRODUCED OR TRANSMITTED IN ANY FORM OR BY ANY MEANS, ELECTRONIC OR MECHANICAL, INCLUDING PHOTOCOPYING, RECORDING, OR BY ANY INFORMATION STORAGE AND RETRIEVAL SYSTEM. UTILITY HELPNET, INC. IS NOT RESPONSIBLE FOR ANY ERRORS OR OMISSIONS. THE USER ASSUMES ALL LIABILITY FOR THE USE OF THIS DOCUMENT.

DRAWN BY: GEN		DATE: 2/15/2011		CHECKED BY: GEN		DRAWING NO.	
CITY OF WAYNOKA, OK		PROJECT MAP C,J,K		SH 2 of 2		SHT. OF	
PLOT SCALE: NTS		UTILITY HELPNET, Inc		PO BOX 9286		TELEPHONE - (316) 946-1144	
NATURE OF CHANGE		Waynoka, KS 67277		FAX - (316) 659-0923			
NO	DATE	BY	CHK				

Project: K
General Location: Alley East of Missouri
Ash to Cecil

Page	1
of	1

Issued 2/16/2011

Point Details									Removal/Maintenance Billing Units			
Point	New Pole	Primary AU	Sec AU	GUY	TS	Surge Arrestor	Grnding	Other	Layout Code	Pole Removal	Other R/M	Special Instructions
1464		XC5_21									XC5_21R	Replae deadend including crossarm
1463					XG3_1	TSCHG					XG3_1R	50 KVA 120/208
1462												No Changes
1461												No changes
1460		XC6_22									XC6_22R	Rep xarm and DE insul.
1459	PW40	XC5_21			XG3_1	TSCHG	XH1_1			PW30	XG3_1R	Set pole in foam 3x15kva 120/208
1458		XC5_21									XC5_21R	Replace Buck arm, new insulators
1457	PW40	XC1_11			XG1_4		XH1_1			PW35		25kVA
1456	PW45	XC1_11	XC5_21			TSCHG		LT		PW45R		REM Wire to West, Kepp SS to TS East
1455	PW40	XC1_11			XG1_4	TSCHG	XH1_1				XG1_4R	15KVA Treat old TS as PCB
1454	PW40	XC1_11			XG1_4	TSCHG	XH1_1				XG1_4R	15KVA Treat old TS as PCB
1453	PW40	XC1_11			XG1_4	TSCHG	XH1_1				XG1_4R	25KVA
1545	PW45	XC1_11	XC6_21				XH1_1	XSP2_3		PW40	XC1_11R	12 south4kv north of pole
1514	PW40	XC1_11			XG1_4	TSCHG	XH1_1				XG1_4R	25KVA Reuse TS leave secondary for now Convert TS and line south of elm to 12470
1513		XC1_11										
1512		XC1_11										
1511		XC1_11										
1510		XC1_11										
1509	PW40	XC1_11			XG1_4		XH1_1				XG1_4R	25KVA
1508		XC1_11										
1507		XC6_22									XC5_21R	
21	Total Number of Points on Project											

Span Details												
Conductor Size						Three Phase		Installation Billing Units		Removal Billing Units		Special Instructions
Start Point	End Point	Num of Spans	Total Length	Average Span	Ruling Span	Tangent Spans	Deadend Spans	Tangent Spans	Deadend Spans			
1458	1459	1	80	80.0	SLACK		1		1	REPLACE #4 CU WITH 1/0 ACSR		
1458	3173	1					1		1	Replace OWS W 1/0 Tri		
1458	1545	6						4	2	Remove OWS		
1458	1457	1					1			Install 1/0 Tri Sec.		
1453	1545	1					1			Install 1/0 Tri Sec.		
1545	1514	1							1	REM 3 ph pri		
1545	1507	8	780	97.5	100		8			New 1/0 ACSR 3 ph and new Neutral		
Total		19	860	88.8			0	12	4	5		